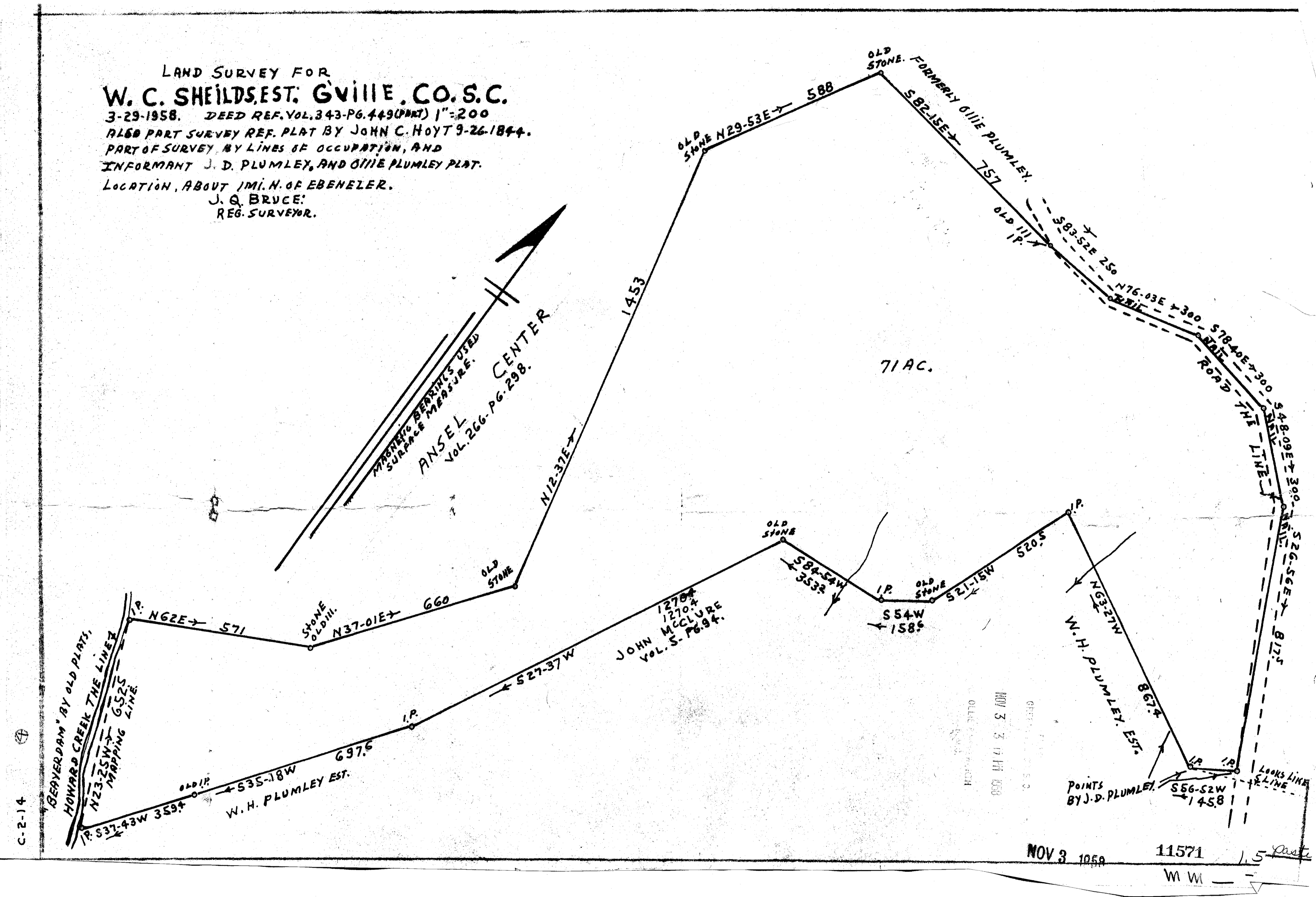


LAND SURVEY FOR
W. C. SHEILDS, EST. GREENVILLE, CO. S.C.
 3-29-1958. DEED REF. VOL. 343-PG. 449 (PART) 1"=200
 ALSO PART SURVEY REF. PLAT BY JOHN C. HOYT 9-26-1844.
 PART OF SURVEY BY LINES OF OCCUPATION, AND
 INFORMANT J. D. PLUMLEY, AND OLLIE PLUMLEY PLAT.
 LOCATION, ABOUT 1 MI. N. OF EBENEZER.
 J. Q. BRUCE,
 REG. SURVEYOR.



C-2-14

BEVERDAM BY OLD PLATS,
 HOWARD CREEK THE LINE
 N23-25W 652.5
 MAPPING LINE

MAGNETIC BEARINGS USED
 SURFACE MEASURE.
 ANSEL
 VOL. 266-PG. 298.

1270.4
 1270.4
 JOHN
 MCCLURE
 VOL. 5. PG. 94.

POINTS
 BY J. D. PLUMLEY.

NOV 3 1958

11571

1.5 Part

11571 Filed This 3 day of Nov 1958
 And Recorded in Vol. 11571 Page 2 at
 Caddis Sawmills
 Register Messrs Conveyance Greenville County, S.C.